



MANUFACTURING CO., INC.

5330 East 25th Street
Indianapolis, Indiana 46218
Phone (317) 261-1212
Fax (317) 261-1208

www.lawlervalve.com

DATA SHEET

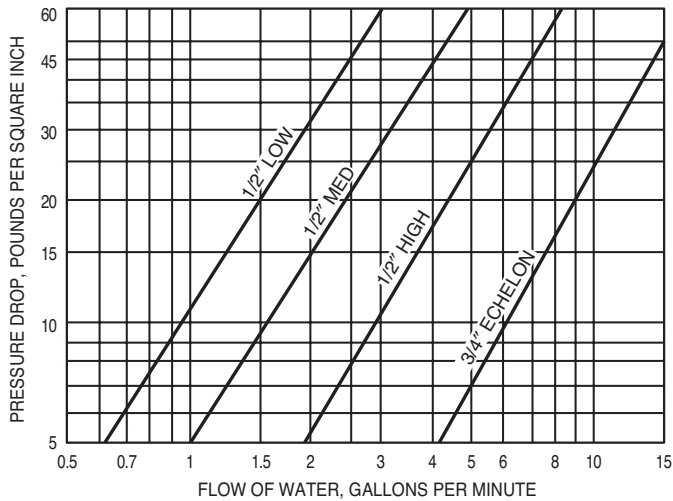
Eng. # 9700-D

Thermostatic & Pressure Balanced Valve

Combination pressure-balanced and thermostatically-controlled mixing valve with acrylic handle.

Model # 9700

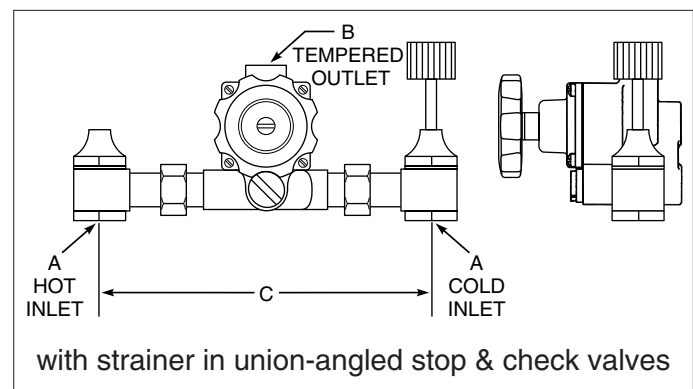
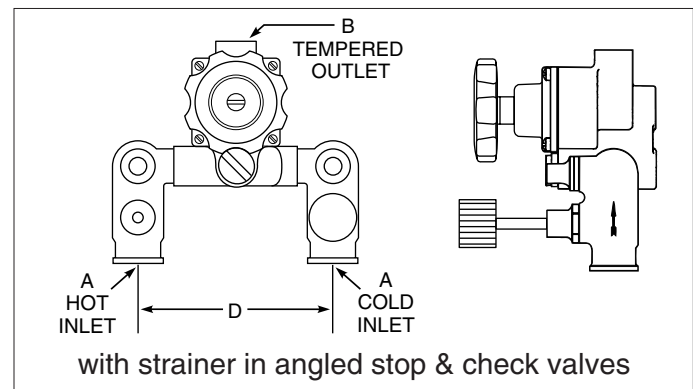
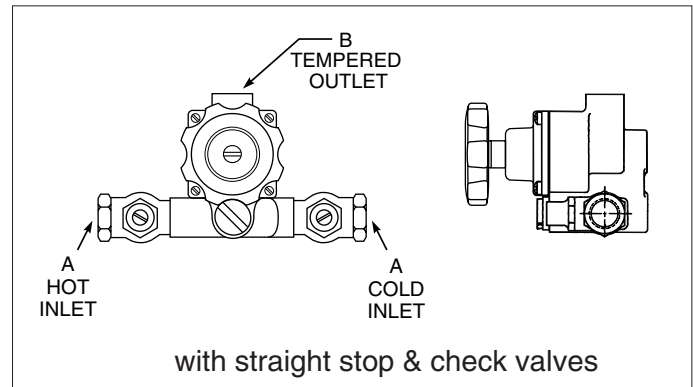
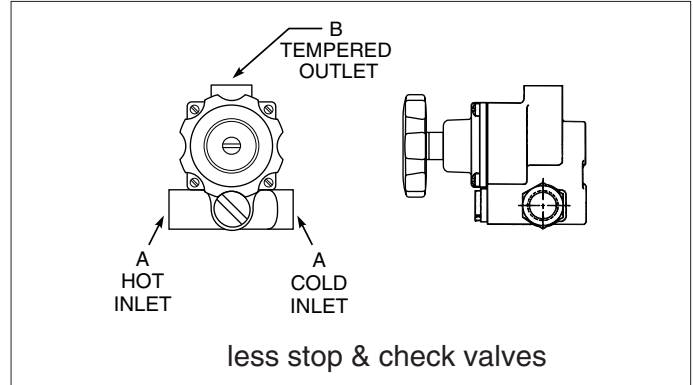
The Lawler combination pressure-balanced and thermostatically-controlled mixing valve consists of independent pressure balancing and thermostatic control sections contained in one bronze body. The valve's piston, and liner are constructed of stainless steel material. The thermostat is solid liquid filled. The mixing valve has integral shut-off and is adjustable from cold to 105°F unless otherwise specified. The valve employs an adjustable temperature limit stop.



A N.P.T.	B N.P.T.	C	D
1/2"	1/2"	8 1/2"	4 7/8"
3/4"	3/4"	9 1/2"	NA

OPTIONS

- Suffix VR – Vandal-resistant handle screw
- Prefix H – High flow
- Prefix M – Standard flow
- Prefix L – Low flow



Design and specification subject to change without notice.

DATAPHOTO